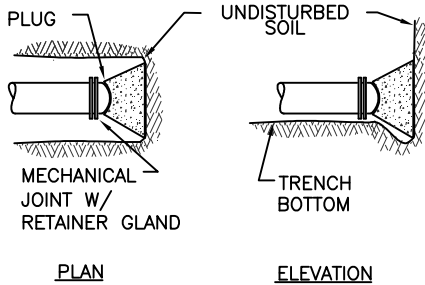


THRUST BLOCK TYPICAL



PLUG DETAIL

SIZE	BENDS				TEES *	GATE VALVES	DEAD ENDS	CROSS W/ 1 BRANCH PLUGGED	CROSS W/ 2 BRANCH PLUGGED
	30'	45'	22 1/2'	11 1/4'					
3	1.0	0.6	0.3	0	0.7	0.5	0.7	0.7	0.7
4	1.8	1.0	0.5	0	1.3	0.5	1.3	1.3	1.3
6	4.0	2.2	1.1	0	2.8	0.7	2.8	2.8	2.8
8	7.1	3.8	2.0	1.0	5.0	2.4	5.0	5.0	5.0
10	11.1	6.0	3.0	1.5	7.8	4.5	7.8	7.8	7.8
12	16.0	8.6	4.4	2.2	11.3	7.3	11.3	11.3	11.3
14	21.7	11.8	6.0	3.0	15.4	11.0	15.4	15.4	15.4
15	25.0	13.5	7.0	3.5	17.6	SPECIAL DESIGN	17.6	17.6	17.6
16	28.4	15.3	8.0	4.0	20.0		20.0	20.0	20.0
18	36.0	19.4	10.0	5.0	25.4		25.4	25.4	25.4
20	44.2	24.0	12.2	6.1	31.4		31.4	31.4	31.4
21	49.0	26.5	13.5	6.8	34.6		34.6	34.6	34.6
22	54.0	29.0	14.8	7.4	38.0		38.0	38.0	38.0
24	64.0	34.5	17.7	8.8	45.0		45.0	45.0	45.0
30	100.0	54.0	27.6	13.8	71.0		71.0	71.0	71.0
36	144.0	78.0	40.0	20	102.0		102.0	102.0	102.0

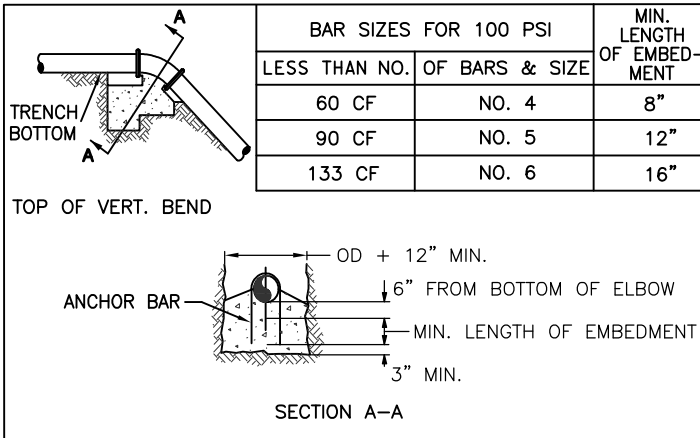
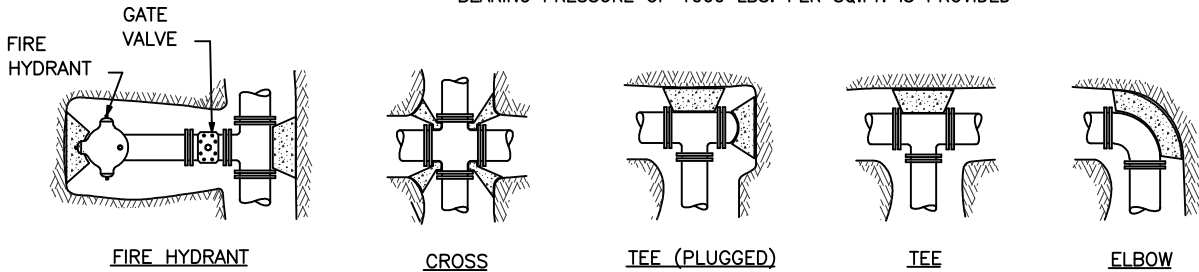
* SIZE IS BRANCH SIZE

AREAS GIVEN IN TABLE ARE BASED UPON AN INTERNAL STATIC PRESSURE OF 100 P.S.I. AND A SOIL BEARING CAPACITY OF 1000 LBS. PER SQ. FT. BEARING AREAS FOR ANY PRESSURE AND SOIL BEARING CAPACITY MAY BE OBTAINED BY MULTIPLYING THE TABULATED VALUES BY A CORRECTION FACTOR "F".

$$F = \frac{\text{ACTUAL SPECIFIED TEST PRESSURE IN HUNDREDS OF LBS./SQ. IN.}}{\text{ACTUAL SOIL BEARING CAPACITY IN THOUSANDS OF LBS.}}$$

TABLE OF BEARING AREAS IN SQ. FT. FOR CONCRETE THRUST BLOCKING

* THRUST BLOCKS AGAINST NON-NATIVE MATERIALS MUST BE UPSIZED UNLESS A BEARING PRESSURE OF 1000 LBS. PER SQ.FT. IS PROVIDED



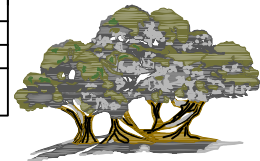
BAR SIZES FOR 100 PSI		MIN. LENGTH OF EMBEDMENT
LESS THAN NO.	OF BARS & SIZE	
60 CF	NO. 4	8"
90 CF	NO. 5	12"
133 CF	NO. 6	16"

SIZE	BENDS		
	45'	22 1/2'	11 1/2'
3	3.7	1.9	1.4
4	6.5	3.3	1.7
6	14.6	7.5	3.7
8	26.0	13.2	6.6
10	40.5	20.7	10.3
12	58.5	30.0	14.8
14	79.5	40.7	20.2
15	91.0	46.6	23.2
16	104.0	53.0	26.5
18		67.3	33.4
20		83.0	41.0
21			45.5
22	SPECIAL DESIGN REQUIRED		50.0
24			59.5
30			
36			

TABLE OF VOLUMES OF CONCRETE (IN CU. FT.)

REQ'D FOR VERT. BEND ANCHOR BLOCKS FOR 100 P.S.I. PRESSURE ADJUST VOLUMES BY MULTIPLYING TABULATED VALUES BY A CORRECTION FACTOR "F".

$$F = \frac{\text{ACTUAL SPECIFIED TEST PRESSURE}}{100}$$



CEDAR HILLS

STANDARD DRAWING NO.

404

THRUST BLOCK DETAILS